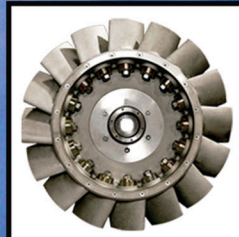
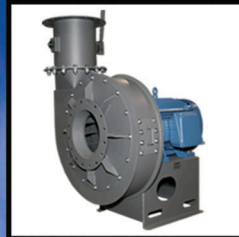


Product Catalog



A Fläkt Woods Company

**American
Fan Company**

American Fan Company - A Global Connection

American Fan Company, located in Fairfield, Ohio, USA, is part of the Flakt Woods Group, an international company providing solutions for industry and infrastructure applications worldwide. The quality and reliability of our products are built upon a solid foundation of unrivaled application expertise and technical leadership. American Fan offers its customers the perfect mix of local presence and global reach, of personal service and advanced technology, of product quality and application versatility.

Advanced Fan Technology



Throughout our history, we have invested aggressively in technology development, with programs that produced breakthroughs in aerodynamics, acoustics, vibration control, and motor performance. Advanced modeling and testing ensure that our products perform efficiently and reliably, over a long service life. American Fan Company's own on-site testing laboratory, in conjunction with eight other Research and Development Centers within the Flakt Woods Group, develop and apply air moving technology for the needs of world markets. Our computerized Flakt Woods Fan Selector program aids engineers and representatives in selecting the optimal fan for the required duty. The selector also includes product specifications and detailed drawings of our complete fan line.

Download the selector at www.flaktwoods.com



Quality Assurance

In 1994, American Fan Company was the first fan company in North America to become ISO certified, and today maintains certification under ISO 9001 - 2001. A separate Quality Assurance Department is staffed to operate the company's Continuous Improvement Programs, with particular emphasis placed on welding and in-process procedures. Maintaining ISO certification requires each and every employee to participate in all aspects of our quality program. Our common goal is to achieve total customer satisfaction.

American Fan Company

Product Information



AF Pressure Blowers

- Volumes to 3800 CFM, pressures to 20" WG
- Wheel types: Radial, Backward Curved, Forward Curved
- Corrosion and spark-resistant cast aluminum wheel and housing
- Light weight, yet rugged castings

(see bulletin AF-0302) *Available in our "Quick Ship Program"*



Turbo Pressure Blowers

- Volumes to 9200 CFM, and static pressures 86" WG
- Welded, heavy gage housing, field rotatable and reversible
- Four impeller designs
- Eight basic fan sizes with wheels up to 31-1/2" diameter

(see bulletin VP-0404)



RB Pressure Blowers

- Volumes to 12,000 CFM, pressures to 110" WG
- Available in Stainless Steel and other alloys for severe applications
- Welded, heavy gage housing, field rotatable and reversible
- Five basic fan sizes with wheels up to 39-1/2" diameter

(see bulletin RB-0502)



BCS, BCA Backward-Inclined Fans, Single Width

- Volumes to 94,000 CFM, pressure to 25" WG
- AMCA Certified for Air and Sound Performance
- High efficiency, Backward Curved wheel
- Sizes from 12-1/4" to 66" wheel diameter

(see bulletin AS-0953)

Product Information



QBCS, QBCA Backward-Inclined Fans, Square Housed

- Volumes to 69,000 CFM, pressures to 20" WG
- AMCA Certified for Air and Sound Performance
- Compact housing, rotatable to 4 discharge positions
- Fourteen SWSI fan sizes from 12-1/4" to 44-1/2" diameter

(see bulletin AS-0953)



DBCS, DBCA Backward-Inclined Fans, Double Width

- Volumes to 190,000 CFM, pressures to 20" WG
- 16 Double Width fan sizes from 12-1/4" to 54-1/4" diameter
- Available in conventional scroll design or compact square design

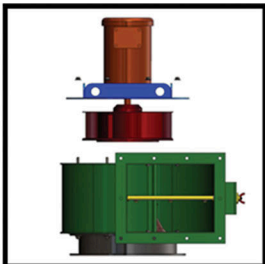
(see bulletin AS-0953)



PBCS, PBCA Backward-Inclined Plug Fans

- Volumes to 90,000 CFM, pressures to 12" WG
- Up to 1,000 degrees F (operating temperature)
- Sixteen fan sizes from 12-1/4" to 54-1/4" diameter
- Several insulated plug thicknesses available

(see bulletin PBCS-1201)

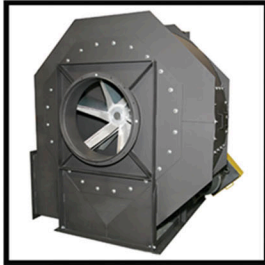


Flange Mount Fans

- Saves critical space in dust collection applications
- Direct drive fans mount on inlet flange
- Compact, efficient design
- 10 models, sizes 12-1/4" to 20" diameter

(see bulletin IB-0708)

Product Information



Industrial Exhausters

- Volumes to 75,000 CFM, pressures to 45" WG
- Severe duty, material handling applications
- Choice of four impeller designs
- 12 fan sizes from 12-3/16" to 57-1/2" diameter

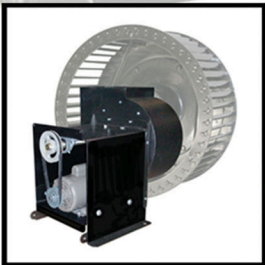
(see bulletin IE- 0606)



SC Forward Curved Volume Blowers

- Volumes to 1400 CFM, pressures to 4" WG
- Cast aluminum base, and split cast aluminum housing
- Forward curved wheel for low noise and efficient performance
- Four sizes; Wheels from 3.81" to 8" diameter

(see bulletin SC-1000) *Available in our "Quick Ship Program"*



SMB Forward Curved Utility Blowers

- Volumes to 4800 CFM, pressures to 3" WG
- Packaged utility set for belt drive applications
- Forward curved wheel for low noise and efficient performance
- Four sizes; wheels from 8" to 12" diameter

(see bulletin SMB-1101) *Available in our "Quick Ship Program"*



PL Plenum Fans

- High performance impeller
- Rugged, easily adjustable motor mount
- Rigid fan shroud and frame

(see bulletin PLP-12-08)

Product Information

Proudly supplying the “Woods” brand to all markets.



JM Aerofoil Fans *Available in our “Quick Ship Program”*

- Volumes to 425,000 CFM, pressures to 10.5” WG
- Compact, low cost, high efficiency, rugged design
- Twenty-one sizes from 315mm to 3150mm diameter
- Adjustable pitch impeller. Available in belt drive or direct drive
(see bulletins JMA60-05 or JMB 8-06 for belt drives)



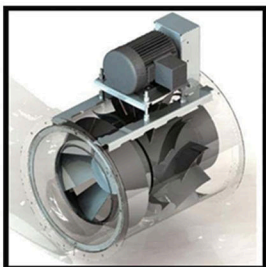
Evase JMG Fans

- Saves energy by incorporating a built-in outlet cone
- Utilizes the JM adjustable pitch impeller
- Sizes from 500mm to 1600mm diameter
- Compact design has smaller footprint than fans with a separate cone
(see bulletin ECA 10-07)



Varofoil Controllable Pitch Fans

- Volumes to 400,000 CFM, pressures to 13” WG
- Impeller diameters from 630mm to 2800mm
- Controllable pitch (in motion) or adjustable pitch (at rest) impellers
- Significant power savings, reliable, and low maintenance
(see bulletin VF-2000)



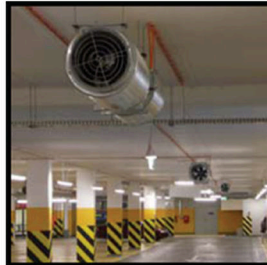
Mixed Flow “Plus” Fans (MXP)

- Sizes from 500mm to 1250mm diameter
- Quiet and efficient
- Smaller footprint than similar type fans
- Wide variety of mounting options
(see bulletin MXF 09-08)

American Fan also offers a wide variety of specialty fans



Smoke Exhaust



Parking Garages



Special OEM fans



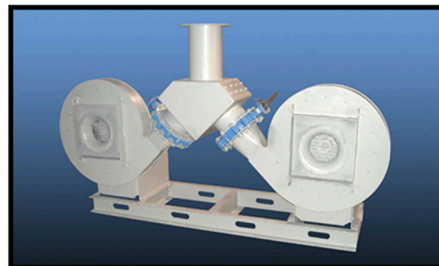
Navy-Marine Duty



Roof Ventilation



Dust Collection



Back-up Fan Systems



Portable Ventilation

American Fan Company is supported by a network of over 100 sales representatives throughout the U.S., so your air moving solutions are always close by.

To locate the sales representative nearest you, visit our website:

www.flaktwoods.us

Or contact us at:

(513)-874-2400

We appreciate your business !

Since it's beginning in 1969, American Fan Company has always put customer relationships first, by providing the highest quality of service to our valued customers. Experienced sales representatives are located throughout North America to provide local support and assistance. These representatives work closely with our own Sales Team, Customer Service and Aftermarket Department to insure the best possible service before, during, and after each sale.

● Service and Aftermarket

- Our Service and Aftermarket Department is staffed with experienced, knowledgeable technicians, supplying replacement parts for American Fan, Woods, and all Flakt Woods product lines. Our skilled technicians perform start-ups and commissioning for newly installed units, repairs and up-upgrades for older units, preventive maintenance and field balancing.

American Fan Company

2933 Symmes Road
Fairfield, Ohio 45014
(513)-874-2400
www.flaktwoods.us

A Flakt Woods Company

